

# Yellow Mountains

Flügelhorn 1

Jacob de Haan

Andante espressivo ♩ = 76



Musical staff 1, starting at measure 1. The key signature has one sharp (F#) and the time signature is common time (C). The music begins with a dynamic marking of *mf*. The staff contains a series of eighth and sixteenth notes, many of which are beamed together and have slurs above them.



Musical staff 2, starting at measure 8. The music continues with similar rhythmic patterns and slurs.



Musical staff 3, starting at measure 15. The key signature changes to two flats (Bb, Eb). The music continues with slurs and dynamic markings.



Musical staff 4, starting at measure 22. The music continues with slurs and dynamic markings.



Musical staff 5, starting at measure 29. The music continues with slurs and dynamic markings, including *f* and *pp*.



Musical staff 6, starting at measure 36. The music continues with slurs and dynamic markings, including *mp* and *f*.



Musical staff 7, starting at measure 43. The music continues with slurs and dynamic markings, including *mf*.



Musical staff 8, starting at measure 50. The music continues with slurs and dynamic markings.

Blasorchester Salinia Sülze e.V.  
Probe-Noten

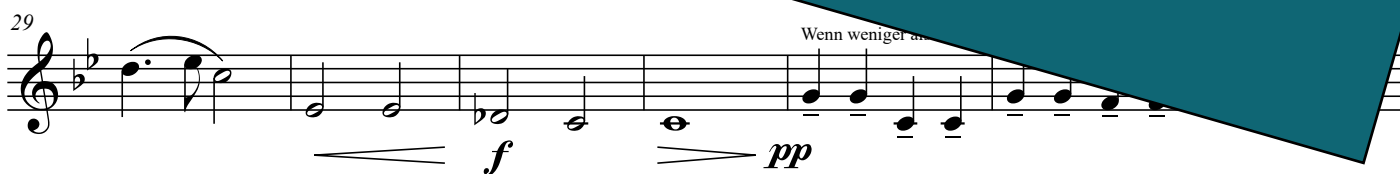
Mehr Informationen unter <https://magazin.salinia.de>

# Yellow Mountains

Flügelhorn 2

Jacob de Haan

Andante espressivo ♩ = 76



Blasorchester Salinia Sülze e.V.  
Probe-Noten

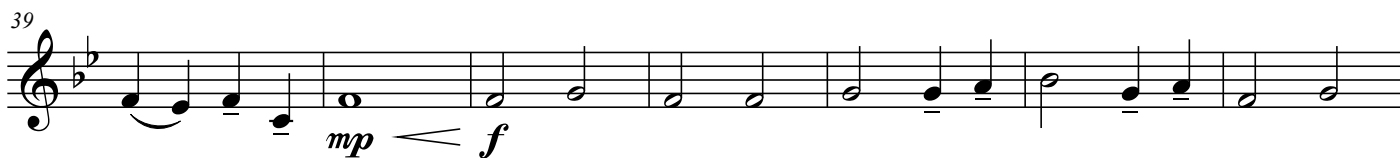
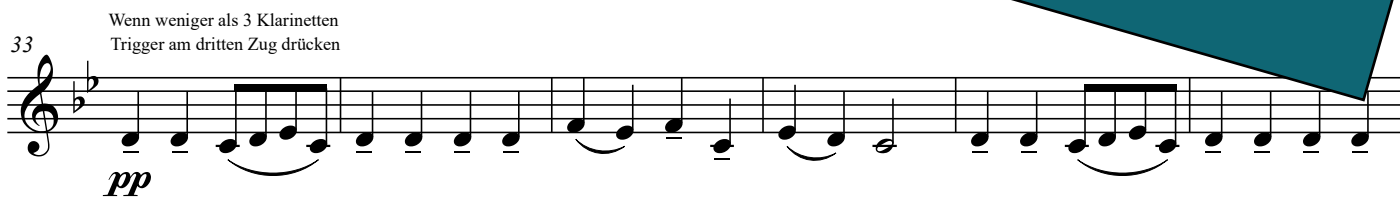
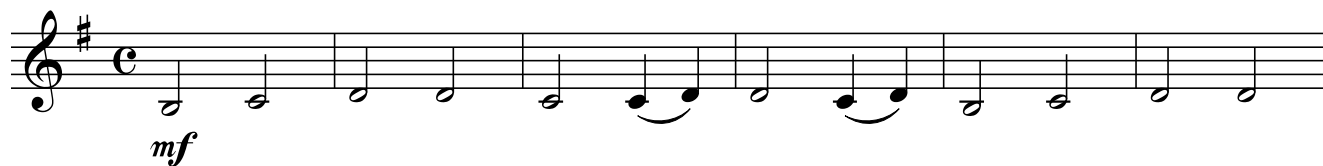
Mehr Informationen unter <https://magazin.salinia.de>

# Yellow Mountains

Flügelhorn 3

Jacob de Haan

Andante espressivo ♩ = 76



Blasorchester Salinia Sülze e.V.  
Probe-Noten

Mehr Informationen unter <https://magazin.salinia.de>