

tone BUILDERS FOR DEVELOPING BANDS

James Curnow (ASCAP)

1. Unison Utopia

Moderately slow

5

2. Statements and Structures

Moderately slow

5

3. Chorale Conquest

Moderately slow

5

4. Presidential Processional

Blasorchester Salinia Sülze e.V.
Probe-Noten

Moderately slow

6. Unison Euphoria

Moderately slow

5

7. Suspension Sensation

Moderately slow with intensity

5

8. Minor Mode

Slow and dramatic

5

Mehr Informationen unter <https://magazin.salinia.de>

9. Melody Muster

Moderately slow 5

mf

Detailed description: A single staff of music in 4/4 time. It begins with a treble clef and a key signature of one flat. The tempo is 'Moderately slow'. A box containing the number '5' is positioned above the staff. The music consists of a series of quarter notes, starting with a half rest, followed by a quarter note, and then a series of eighth notes. The dynamic is marked as *mf*.

10. Expert Expansion

Moderately slow 5 *Rall.*

mp *cresc.* *f*

Detailed description: A single staff of music in 4/4 time. It begins with a treble clef and a key signature of one flat. The tempo is 'Moderately slow'. A box containing the number '5' is positioned above the staff. The music features a series of quarter notes, some with slurs, and a final half note with a fermata. Dynamics include *mp*, *cresc.*, and *f*. The tempo marking *Rall.* is placed above the final notes.

11. Versatile Variations (Theme)

Moderately slow and sustained 6 *Rall.*

mf *mp*

Detailed description: A single staff of music in 4/4 time. It begins with a treble clef and a key signature of one flat. The tempo is 'Moderately slow and sustained'. A box containing the number '6' is positioned above the staff. The music starts with a triplet of quarter notes, followed by a series of quarter notes and a final half note with a fermata. Dynamics include *mf* and *mp*. The tempo marking *Rall.* is placed above the final notes.

12. High Hurdles (Variation I)

5

mf *f*

Detailed description: A single staff of music in 4/4 time. It begins with a treble clef and a key signature of one flat. A box containing the number '5' is positioned above the staff. The music consists of a series of eighth notes with slurs, creating a rhythmic pattern. Dynamics include *mf* and *f*.

Blasorchester Salinia Sülze e.V.
Probe-Noten

Moderately slow with expression

mp *cresc.* *mf* *mp* *cresc.*

Detailed description: A single staff of music in 3/4 time. It begins with a treble clef and a key signature of one flat. The tempo is 'Moderately slow with expression'. The music features a series of quarter notes with slurs and a final half note with a fermata. Dynamics include *mp*, *cresc.*, *mf*, *mp*, and *cresc.*.

14. Bass Bonanza (Variation III)

Moderately fast 5

mf marc. *cresc.* *f*

Detailed description: A single staff of music in 4/4 time. It begins with a treble clef and a key signature of one flat. The tempo is 'Moderately fast'. A box containing the number '5' is positioned above the staff. The music consists of a series of eighth notes with slurs, creating a rhythmic pattern. Dynamics include *mf marc.*, *cresc.*, and *f*.

15. Flying Fingers (Variation IV)

Fast and light 5

mp *f* *p*

Detailed description: A single staff of music in 4/4 time. It begins with a treble clef and a key signature of one flat. The tempo is 'Fast and light'. A box containing the number '5' is positioned above the staff. The music consists of a series of eighth notes with slurs, creating a rhythmic pattern. Dynamics include *mp*, *f*, and *p*.

16. Fanfare Fantastic (Variation V)

Majestically 5 *Rall.*

f marc. *ff*

Detailed description: A single staff of music in 4/4 time. It begins with a treble clef and a key signature of one flat. The tempo is 'Majestically'. A box containing the number '5' is positioned above the staff. The music features a series of quarter notes, some with slurs, and a final half note with a fermata. Dynamics include *f marc.* and *ff*. The tempo marking *Rall.* is placed above the final notes.

17. Arpeggio Arcade

Moderately slow



9



18. Melodic Maneuvering

Moderately slow and sustained



1. & 3. Fine 2. ,

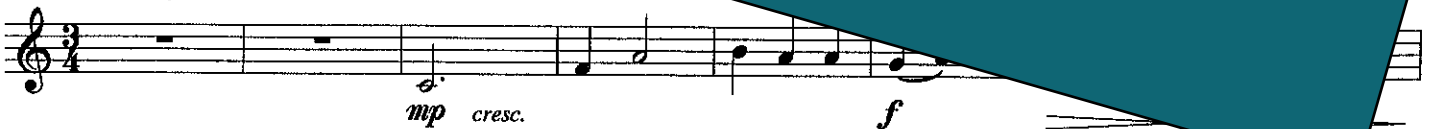
9



D.C. al Fine

Blasorchester Salinia Sülze e.V.
Probe-Noten

Moderately slow and sustained



19.

mp cresc.

f

9

A tempo



D.C. al Fine

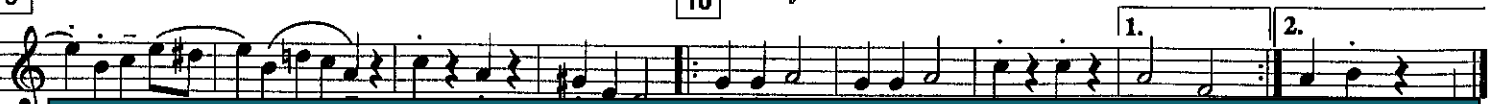
20. March Madness

Moderately fast and stately



6

Delicately



10

Stately

1. 2.

21. Trio Triumphant

Moderately fast and stately

1.

Musical notation for the first staff of 'Trio Triumphant'. It features a treble clef, a key signature of one flat, and a 4/4 time signature. The melody starts with a mezzo-forte (*mp*) dynamic and a legato articulation. It includes a crescendo (*cresc.*) leading to a fortissimo (*f*) dynamic.

9

2.

Musical notation for the second staff of 'Trio Triumphant'. It continues the melody from the first staff, starting with a piano (*p*) dynamic, followed by a crescendo (*cresc.*) to fortissimo (*f*).

22. Chromatic Challenge

Slowly

5

Musical notation for the first staff of 'Chromatic Challenge'. It features a treble clef, a key signature of one flat, and a 4/4 time signature. The tempo is marked 'Slowly'. The dynamics range from piano (*p*) to mezzo-forte (*mf*), with a decrescendo (*dim.*) leading back to piano (*p*).

23. Row Roundabout

Musical notation for the first staff of 'Row Roundabout'. It features a treble clef, a key signature of one flat, and a 4/4 time signature. The dynamics include mezzo-forte (*mf*), decrescendo (*dim.*), and piano (*p*).

Slow with

Musical notation for the second staff of 'Row Roundabout'. It continues the melody with a mezzo-forte (*mf*) dynamic.

Moderately slow with expression

24. Contino (Dona Nobis Pacem)

8

9

Musical notation for the first staff of 'Contino'. It features a treble clef, a key signature of one flat, and a 3/4 time signature. The tempo is 'Moderately slow with expression'. The dynamic is mezzo-piano (*mp*).

17

Musical notation for the second staff of 'Contino'. It continues the melody with a mezzo-forte (*mf*) dynamic, ending with a piano (*p*) dynamic.

25

Musical notation for the third staff of 'Contino'. It continues the melody with a mezzo-piano (*mp*) dynamic, ending with a piano (*p*) dynamic.

Rall.

Musical notation for the fourth staff of 'Contino'. It features a decrescendo (*cresc.*) leading to a mezzo-forte (*mf*) dynamic, ending with a piano (*p*) dynamic. The tempo is marked 'Rall.' (Ritardando).

Blasorchester Salinia Sülze e.V.
 Probe-Noten

TONE BUILDERS FOR DEVELOPING BANDS

1. Unison Utopia

Moderately slow

mf

5

Musical notation for '1. Unison Utopia' in bass clef, 4/4 time. It consists of a single line of music with a box containing the number '5' above the fifth measure. The dynamic is *mf*.

2. Statements and Structures

Moderately slow

mf

5

Musical notation for '2. Statements and Structures' in bass clef, 4/4 time. It consists of a single line of music with a box containing the number '5' above the fifth measure. The dynamic is *mf*.

3. Chorale Conquest

Moderately slow

mp *p* *cresc.* *mf*

5

Musical notation for '3. Chorale Conquest' in bass clef, 4/4 time. It consists of a single line of music with a box containing the number '5' above the fifth measure. Dynamics include *mp*, *p*, *cresc.*, and *mf*.

4. Presidential Processional

Moderately slow

f

5

Rall.

Musical notation for '4. Presidential Processional' in bass clef, 4/4 time. It consists of a single line of music with a box containing the number '5' above the fifth measure. Dynamics include *f* and *Rall.*

Moderately slow

Solo *All* *Solo*

mf

5

Rall.

Musical notation for '5. Presidential Processional' in bass clef, 4/4 time. It consists of a single line of music with a box containing the number '5' above the fifth measure. Dynamics include *mf*, *Solo*, *All*, and *Rall.*

6. Unison Euphoria

Moderately slow

mp legato *cresc.* *mf* *mp*

5

Musical notation for '6. Unison Euphoria' in bass clef, 3/4 time. It consists of a single line of music with a box containing the number '5' above the fifth measure. Dynamics include *mp legato*, *cresc.*, *mf*, and *mp*.

7. Suspension Sensation

Moderately slow with intensity

mp legato *cresc.* *f* *mp*

5

Rall.

Musical notation for '7. Suspension Sensation' in bass clef, 3/4 time. It consists of a single line of music with a box containing the number '5' above the fifth measure. Dynamics include *mp legato*, *cresc.*, *f*, and *mp*. There is also a *Rall.* marking.

8. Minor Mode

Slow and dramatic

2

mp

5

Musical notation for '8. Minor Mode' in bass clef, 4/4 time. It consists of a single line of music with a box containing the number '2' above the first measure and a box containing the number '5' above the fifth measure. The dynamic is *mp*.

9

cresc. *f* *mp*

Rall.

Musical notation for '9. Minor Mode' in bass clef, 4/4 time. It consists of a single line of music with a box containing the number '9' above the first measure. Dynamics include *cresc.*, *f*, and *mp*. There is also a *Rall.* marking.

Blasorchester Salinia Sülze e.V.
Probe-Noten

9. Melody Muster

Moderately slow

5

Sheet music for exercise 9, bass clef, 4/4 time, starting with *mf*.

10. Expert Expansion

Moderately slow

5

Sheet music for exercise 10, bass clef, 4/4 time, starting with *mp*, including *cresc.* and *f* markings, and ending with *Rall.*

11. Versatile Variations (Theme)

Moderately slow and sustained

3

6

Rall.

Sheet music for exercise 11, bass clef, 4/4 time, starting with *mf*, including a triplet of 3 notes, and ending with *mp*.

12. High Hurdles (Variation I)

5

Sheet music for exercise 12, bass clef, 4/4 time, starting with *mf*, including accents, and ending with *f*.

Moderately slow with expression

Sheet music for exercise 13, bass clef, 3/4 time, starting with *mp*, including *cresc.*, *mf*, and *mp* markings.

14. Bass Bonanza (Variation III)

5

Moderately fast

Sheet music for exercise 14, bass clef, 4/4 time, starting with *mf marc.*, including *cresc.*, and ending with *f*.

15. Flying Fingers (Variation IV)

Fast and light

5

Sheet music for exercise 15, bass clef, 4/4 time, starting with *mp*, including *f* and *p* markings.

16. Fanfare Fantastic (Variation V)

Majestically

5

Sheet music for exercise 16, bass clef, 4/4 time, starting with *f marc.*, including *ff* and *Rall.* markings.

Blasorchester Salinia Sülze e.V.
Probe-Noten

17. Arpeggio Arcade

Moderately slow

mp

mf *mp* *p*

9

18. Melodic Maneuvering

Moderately slow and sustained

cresc. *f* *mp* *mf*

1. & 3. *Fine* 2.

D.C. al Fine

Blasorchester Salinia Sülze e.V.
Probe-Noten

Moderately slow and sustained

mp *cresc.* *f* *mp* *mf*

9 *A tempo*

D.C. al Fine

mf *cresc.* *f* *mf* *dim.* *p*

20. March Madness

Moderately fast and stately

mf *cresc.* *f* *mf* *dim.* *p*

6 *Delicately* 10 *Stately* 1. 2.

21. Trio Triumphant

Moderately fast and stately

1.

mp legato *cresc.* *f*

9

p *cresc.* *f* *f*

2.

22. Chromatic Challenge

Slowly

5

p *cresc.* *mf* *dim.* *p*

23. Row Roundabout

9

dim. *p*

Slow with intensity

mf

Moderately slow with expression

24. Continental Can (German) (Dona Nobis Pacem)

8

mp

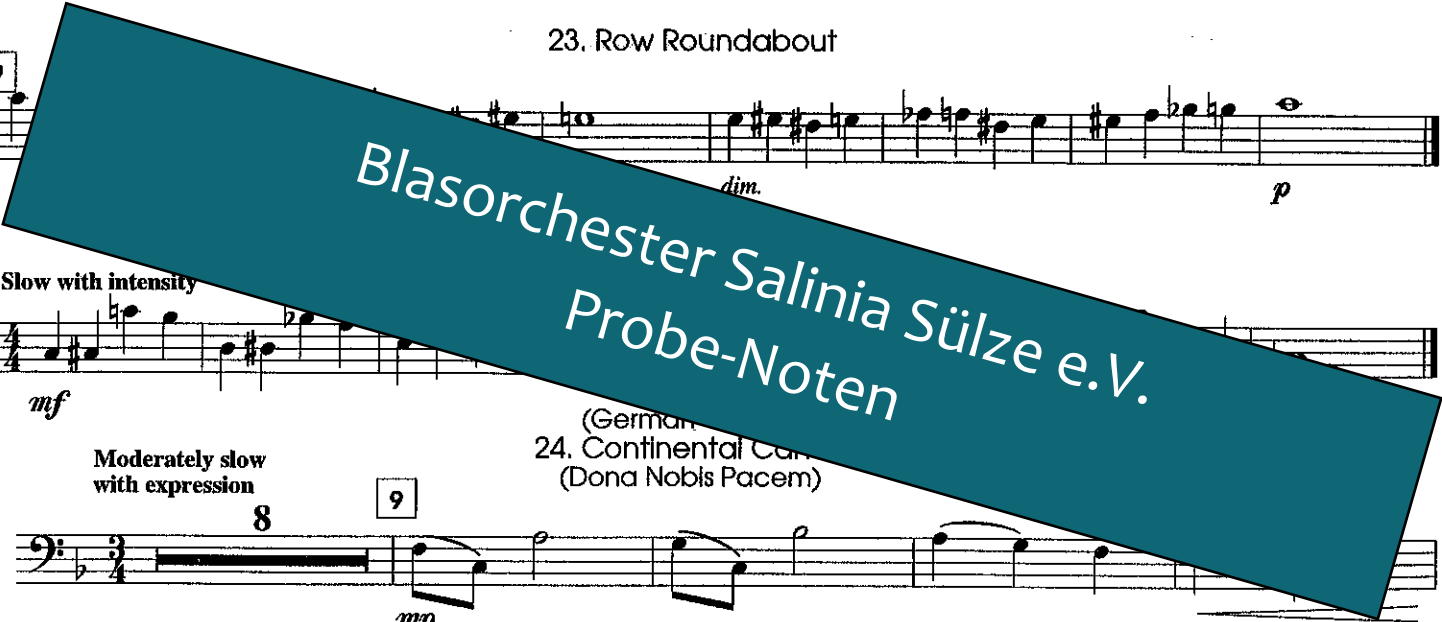
mf *p*

17

mp *p*

25

cresc. *mf* *Rall.* *p*



TONE BUILDERS FOR DEVELOPING BANDS

James Curnow (ASCAP)

1. Unison Utopia

Moderately slow

5

mf

2. Statements and Structures

Moderately slow

5

mf

3. Chorale Conquest

Moderately slow

5

p *cresc.* *mf*

4. Presidential Processional

mf marc. *Rall.*

Blasorchester Salinia Sülze e.V.
 Probe-Noten

Moderately slow

Solo *All* *Solo* *All*

mf

6. Unison Euphoria

Moderately slow

5

mp legato *cresc.* *mf* *mp*

7. Suspension Sensation

Moderately slow with intensity

5

mp legato *cresc.* *f* *Rall.* *mp*

8. Minor Mode

Slow and dramatic

2

mp

9

Rall.

Mehr Informationen unter <https://magazin.salinia.de>

BARITONE

9. Melody Muster

5

Moderately slow

10. Expert Expansion

5

Moderately slow

Rall.

11. Versatile Variations (Theme)

Rall.

Moderately slow and sustained

6

12. High Hurdles (Variation I)

5

Moderately slow with expression

5

14. Bass Bonanza (Variation III)

5

Moderately fast

15. Flying Fingers (Variation IV)

5

Fast and light

16. Fanfare Fantastic (Variation V)

5

Majestically

Rall.

Blasorchester Salinia Sülze e.V.
Probe-Noten

Mehr Informationen unter <https://magazin.salinia.de>

BARITONE

17. Arpeggio Arcade

Moderately slow

18. Melodic Maneuvering

Moderately slow and sustained

Blasorchester Salinia Sülze e.V.
Probe-Noten

19. Core

Moderately slow and sustained

20. March Madness

Moderately fast and stately

20. March Madness

Mehr Informationen unter <https://magazin.salinia.de>

BARITONE

21. Trio Triumphant

Moderately fast and stately

1. *mp legato* *cresc.* *f*

9 *p* *cresc.* *f* 2. *f*

22. Chromatic Challenge

Slowly

5 *cresc.* *mf* *dim.* *p*

23. Row Roundabout

p

Slow with intensity

mf

Moderately slow with expression

8 9 *mp*

(German Canon)
24. Continental Canon
(Dona Nobis Pacem)

17 *mf* *p*

25 *mp* *p*

Rall.

Blasorchester Salinia Sülze e.V.
Probe-Noten

Mehr Informationen unter <https://magazin.salinia.de>