

Dompfaff

1. Tenorhorn in Bb

Musik: Ernst Mosch
Arr.: Gerald Weinkopf

Polkatempo
Soli

p

Trio

mf

Blasorchester Salinia Sülze e.V.
Probe-Noten

p *f*

1. 2. *D.S. al Fine*

Dompfaff

2. Tenorhorn in Bb

Musik: Ernst Mosch
Arr.: Gerald Weinkopf

Polkatempo

1 2 3 4 5 6 1 2 3 4 5 6 7 8

p

①

f

②

③

④

Fine

f

1. 2.

f D.S. al Fine

Blasorchester Salinia Sülze e.V.
Probe-Noten

Dompfaff

3. Tenorhorn in Bb

Musik: Ernst Mosch
Arr.: Gerald Weinkopf

Polkatempo

p

f

Blasorchester Salinia Sülze e.V.
Probe-Noten

f

D.S.al Fine

Dompfaff

Bariton in Bb

Musik: Ernst Mosch
Arr.: Gerald Weinkopf

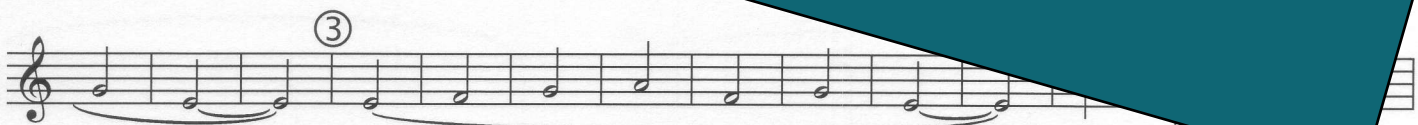
Polkatempo Soli



Blasorchester Salinia Sülze e.V.
Probe-Noten

Trio

mf



Mehr Informationen unter <https://magazin.salinia.de>

Dompfaff

Bariton in C

Musik: Ernst Mosch
Arr.: Gerald Weinkopf

Polkatempo Soli

First musical staff in bass clef, 2/4 time signature, key of B-flat. It begins with a piano (*p*) dynamic marking. The melody consists of eighth and quarter notes with various accidentals.

Second musical staff in bass clef, continuing the melody from the first staff.

Third musical staff in bass clef, starting with a first ending bracket labeled with a circled 1 (①).

Fourth musical staff in bass clef, continuing the melody.

Fifth musical staff in bass clef, labeled "Trio" and starting with a mezzo-forte (*mf*) dynamic marking.

Blasorchester Salinia Sülze e.V.
Probe-Noten

Sixth musical staff in bass clef, starting with a third ending bracket labeled with a circled 3 (③).

Seventh musical staff in bass clef, featuring a first ending bracket labeled with a circled 4 (④), a "Fine" marking, and a forte (*f*) dynamic marking. It also includes the instruction "2. x 8va".

Eighth musical staff in bass clef, continuing the melody.

Ninth musical staff in bass clef, featuring first and second ending brackets labeled "1." and "2.", and a double bar line with a repeat sign.

D.S. al Fine