

Nr. 13 · GrüÙe von der Wolga (Potpourri)

Kurt Sorbon

1. Wolgaschlepper (Andante $\text{♩} = 72$)

First staff of music for '1. Wolgaschlepper'. It begins with a treble clef, a key signature of one flat (B-flat), and a 4/4 time signature. The tempo is marked 'Andante' with a quarter note equal to 72 beats. The first measure is marked with a forte dynamic (*f*). The staff contains several measures of music, with measure numbers 5 and 10 indicated above the notes.

Second staff of music for '1. Wolgaschlepper'. It continues the melody from the first staff. Measure numbers 15 and 20 are indicated above the notes. The dynamic remains *f*.

(Moderato $\text{♩} = 92$) 2. Kosaken - Patrouille

First staff of music for '2. Kosaken - Patrouille'. The tempo is marked 'Moderato' with a quarter note equal to 92 beats. The dynamic is marked *mf*. Measure numbers 25 and 30 are indicated above the notes.

Second staff of music for '2. Kosaken - Patrouille'. Measure numbers 35 and 40 are indicated above the notes. The dynamic remains *mf*.

First staff of music for '3. Abendglocken'. The tempo is marked 'Andante' with a quarter note equal to 76 beats. The dynamic is marked *p*. Measure numbers 45 and 50 are indicated above the notes. A 'Soli' marking is present above the staff.

Second staff of music for '3. Abendglocken'. Measure numbers 55 and 60 are indicated above the notes. The dynamic remains *p*.

(Moderato $\text{♩} = 116$)

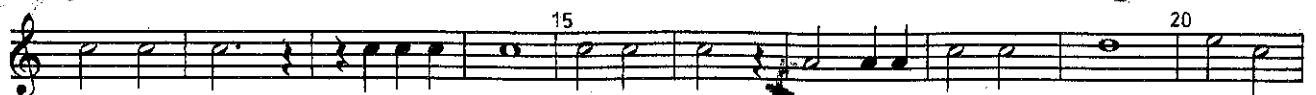
Third staff of music for '3. Abendglocken'. Measure numbers 65 and 70 are indicated above the notes. The dynamic is marked *f*. A 'rit.' marking is present above the staff.

Fourth staff of music for '3. Abendglocken'. Measure numbers 75 and 80 are indicated above the notes. The dynamic remains *f*.

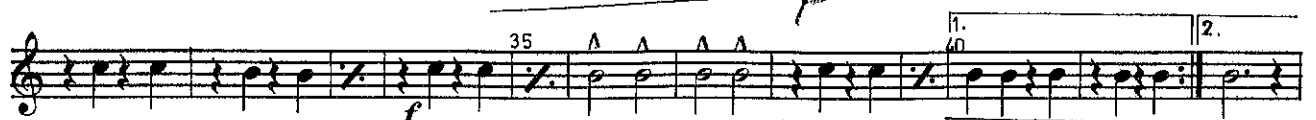
Blasorchester Salinia Sülze e.V.
Probe-Noten

Nr. 13 GröÙe von der Wolga (Potpourri)

Kurt Sorbon

1. Wolgaschlepper (Andante $\text{♩} = 72$)(Moderato $\text{♩} = 92$)

2. Kosaken - Patrouille

3. Abendglocken (Andante $\text{♩} = 76$)4. Rospaschol
(Allegro moderato $\text{♩} = 116$)

Blasorchester Salinia Sülze e.V.
Probe-Noten

